

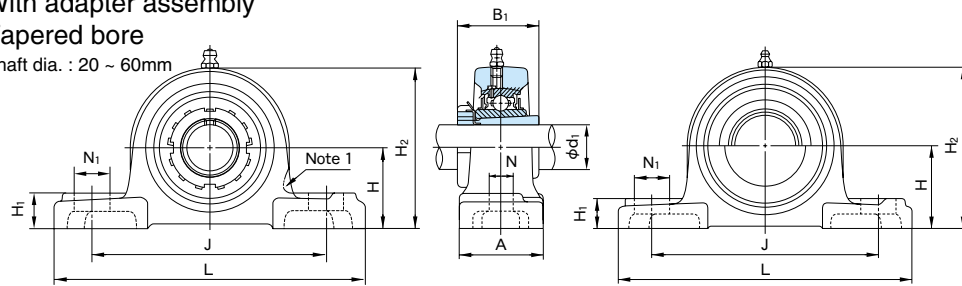
## Pillow Block Units

### UKP+H type

With adapter assembly

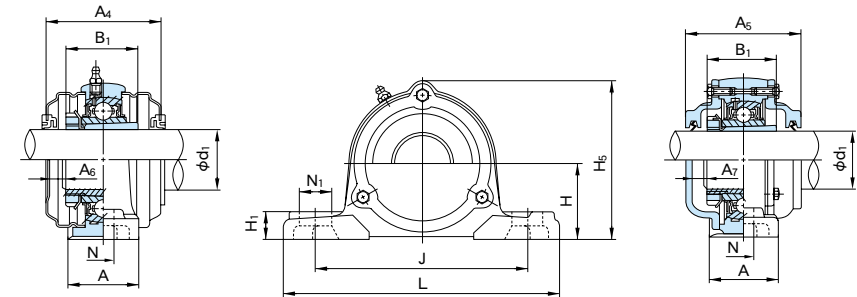
Tapered bore

Shaft dia. : 20 ~ 60mm



Note 1. The line shows figure of UCPX00series

With steel covers



1N=0.102kgf

With cast covers

Shaft dia. d <sub>1</sub> (mm)	Unit No.	Boundary dimensions (mm)															Bearings			Housing No.	Unit No. with steel covers		Unit No. with cast covers		Mass of Unit (kg)			
		H	L	A	J	N	N <sub>1</sub>	H <sub>1</sub>	H <sub>2</sub>	H <sub>5</sub>	B <sub>1</sub>	A <sub>4</sub>	A <sub>5</sub>	A <sub>6</sub>	A <sub>7</sub>	No.	Basic load rating (N)		No.		Covers with rubber seal (End cover on one side)	Covers with rubber seal (End cover on one side)	standard	with steel cover	with cast cover			
		Cr	Cor																									
20	UKP205+H2305	36.5	140	38	105	13	16	16	70	76	35	63	70	11	9	M10	UK205+H2305	14000	7900	P205	UKP205C(E)+H2305	CUKP205C(CE)+H2305	0.84	0.91	1.4			
	UKPX05+H2305	44.4	159	51	119	17	25	18	85	—	35	65	—	10	—	M14		UKX05+H2305	19600		11300	PX05	UKPX05C(E)+H2305	—	—	1.5	1.5	—
	UKP305+H2305	45	175	45	132	17	20	16	84	89	35	—	78	—	12	M14		UK305+H2305	21300		10900	P305	—	CUKP305C(CE)+H2305	1.6	—	2.1	
25	UKP206+H2306	42.9	165	48	121	17	21	18	83	87	38	65	74	10	10	M14	UK206+H2306	19600	11300	P206	UKP206C(E)+H2306	CUKP206C(CE)+H2306	1.4	1.5	2.1			
	UKPX06+H2306	47.6	175	57	127	17	25	20	94	—	38	70	—	12	—	M14		UKX06+H2306	25900		15400	PX06	UKPX06C(E)+H2306	—	—	2.0	2.0	—
	UKP306+H2306	50	180	50	140	17	20	19	94	99	38	—	84	—	13	M14		UK306+H2306	26800		15000	P306	—	CUKP306C(CE)+H2306	1.9	—	2.6	
30	UKP207+H2307	47.6	167	48	127	17	21	19	94	97	43	70	80	11	11	M14	UK207+H2307	25900	15400	P207	UKP207C(E)+H2307	CUKP207C(CE)+H2307	1.6	1.8	2.6			
	UKPX07+H2307	54	203	57	144	17	30	22	105	—	43	83	—	17	—	M14		UKX07+H2307	29300		17900	PX07	UKPX07C(E)+H2307	—	—	2.7	2.7	—
	UKP307+H2307	56	210	56	160	17	25	21	105	110	43	—	90	—	14	M14		UK307+H2307	33500		19200	P307	—	CUKP307C(CE)+H2307	2.7	—	3.5	
35	UKP208+H2308	49.2	184	54	137	17	25	19	100	104	46	82	90	15	14	M14	UK208+H2308	29300	17900	P208	UKP208C(E)+H2308	CUKP208C(CE)+H2308	2.1	2.3	3.1			
	UKPX08+H2308	58.7	222	67	156	20	32	26	113	—	46	82	—	15	—	M16		UKX08+H2308	33000		20500	PX08	UKPX08C(E)+H2308	—	—	3.5	3.5	—
	UKP308+H2308	60	220	60	170	17	27	23	116	122	46	—	100	—	17	M14		UK308+H2308	40500		23900	P308	—	CUKP308C(CE)+H2308	3.0	—	4.4	
40	UKP209+H2309	54	190	54	146	17	22	20	108	114	50	82	90	14	13	M14	UK209+H2309	33000	20500	P209	UKP209C(E)+H2309	CUKP209C(CE)+H2309	2.4	2.6	3.5			
	UKPX09+H2309	58.7	222	67	156	20	33	26	116	—	50	87	—	16	—	M16		UKX09+H2309	35500		23200	PX09	UKPX09C(E)+H2309	—	—	3.5	3.6	—
	UKP309+H2309	67	245	67	190	20	30	25	128	136	50	—	106	—	17	M16		UK309+H2309	51500		29500	P309	—	CUKP309C(CE)+H2309	4.6	—	5.9	
45	UKP210+H2310	57.2	206	60	159	20	25	22	114	120	55	87	98	15	15	M16	UK210+H2310	35500	23200	P210	UKP210C(E)+H2310	CUKP210C(CE)+H2310	2.8	3.2	4.2			
	UKPX10+H2310	63.5	241	73	171	20	36	27	126	—	55	88	—	14	—	M16		UKX10+H2310	43000		29400	PX10	UKPX10C(E)+H2310	—	—	4.3	4.5	—
	UKP310+H2310	75	275	75	212	20	35	28	143	149	55	—	114	—	19	M16		UK310+H2310	61500		38200	P310	—	CUKP310C(CE)+H2310	6.2	—	7.8	
50	UKP211+H2311	63.5	219	60	171	20	25	22	126	133	59	88	100	14	15	M16	UK211+H2311	43000	29400	P211	UKP211C(E)+H2311	CUKP211C(CE)+H2311	3.4	3.8	5.1			
	UKPX11+H2311	69.8	260	79	184	25	36	30	139	—	59	100	—	19	—	M20		UKX11+H2311	52500		36100	PX11	UKPX11C(E)+H2311	—	—	5.8	6.0	—
	UKP311+H2311	80	310	80	236	20	38	31	154	159	59	—	120	—	20	M16		UK311+H2311	71500		44800	P311	—	CUKP311C(CE)+H2311	7.6	—	9.6	
55	UKP212+H2312	69.8	241	70	184	20	25	25	138	145	62	102	114	19	20	M16	UK212+H2312	52500	36100	P212	UKP212C(E)+H2312	CUKP212C(CE)+H2312	4.8	5.2	6.8			
	UKPX12+H2312	76.2	286	83	203	25	41	32	151	—	62	104	—	19	—	M20		UKX12+H2312	57500		40000	PX12	UKPX12C(E)+H2312	—	—	7.1	7.3	—
	UKP312+H2312	85	330	85	250	25	38	33	165	169	62	—	130	—	23	M20		UK312+H2312	81500		52000	P312	—	CUKP312C(CE)+H2312	9.3	—	11.7	
60	UKP213+H2313	76.2	265	70	203	25	29	27	150	156	65	102	118	17	20	M20	UK213+H2313	57500	40000	P213	UKP213C(E)+H2313	CUKP213C(CE)+H2313	5.7	6.2	7.9			
	UKPX13+H2313	76.2	286	83	203	25	41	32	154	—	65	—	—	—	—	M20		UKX13+H2313	62000		44000	PX13	—	—	7.2	—	—	
	UKP313+H2313	90	340	90	260	25	38	36	174	188	65	—	140	—	24	M20		UK313+H2313	92500		59700	P313	—	CUKP313C(CE)+H2313	9.8	—	14.2	

Remarks (1): Grease nipple : 1/4-28UNF

Remarks (2): Examples of number of units with covers:

- With steel cover { Covers with rubber seal on both sides : UKP210C+H2310
- { An end cover and a cover with rubber seal : UKP210E+H2310
- With cast cover { Covers with rubber seal on both sides : CUKP210C+H2310
- { An end cover and a cover with rubber seal : CUKP210CE+H2310

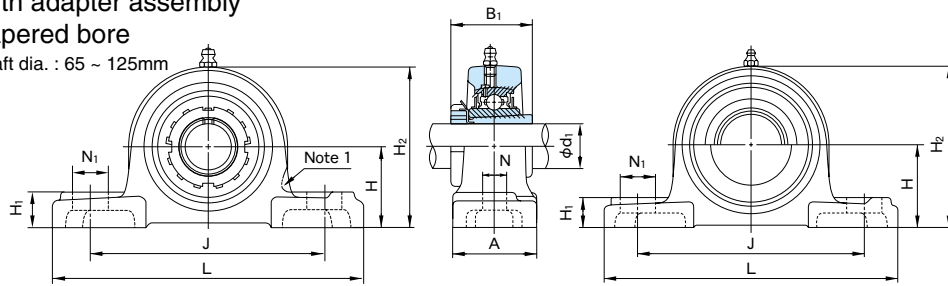
## Pillow Block Units

### UKP+H type

With adapter assembly

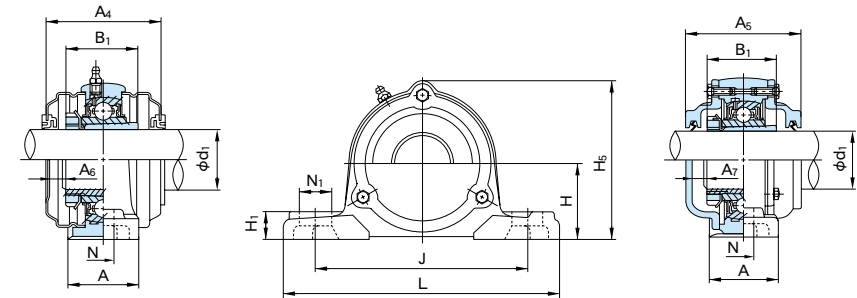
Tapered bore

Shaft dia. : 65 ~ 125mm



Note 1. The line shows figure of UCPX00series

With steel covers



1N=0.102kgf

With cast covers

Shaft dia. d <sub>1</sub> (mm)	Unit No.	Boundary dimensions (mm)														Bolt size	Bearings			Housing No.	Unit No. with steel covers		Unit No. with cast covers		Mass of Unit (kg)		
		H	L	A	J	N	N <sub>1</sub>	H <sub>1</sub>	H <sub>2</sub>	H <sub>5</sub>	B <sub>1</sub>	A <sub>4</sub>	A <sub>5</sub>	A <sub>6</sub>	A <sub>7</sub>		No.	Basic load rating (N)			Covers with rubber seal (End cover on one side)	Covers with rubber seal (End cover on one side)	standard	with steel cover	with cast cover		
																		Cr	Cor								
65	UKP215+H2315	82.6	275	74	217	25	31	28	163	167	73	-	136	-	26	M20	UK215+H2315	66000	48200	P215	-	-	CUKP215C(CE)+H2315	8.3	-	10.0	
	UKPX15+H2315	88.9	330	89	229	27	51	35	177	-	73	-	-	-	-	M22	UKX15+H2315	72500	53000	PX15	-	-	-	11.5	-	-	
	UKP315+H2315	100	380	100	290	27	40	40	197	208	73	-	150	-	25	M22	UK315+H2315	114000	76900	P315	-	-	CUKP315C(CE)+H2315	13.7	-	19.9	
70	UKP216+H2316	88.9	292	78	232	25	31	30	175	188	78	-	146	-	26	M20	UK216+H2316	72500	53000	P216	-	-	CUKP216C(CE)+H2316	10.4	-	12.7	
	UKPX16+H2316	101.6	381	102	283	27	59	42	197	-	78	-	-	-	-	M22	UKX16+H2316	83500	61800	PX16	-	-	-	17.4	-	-	
	UKP316+H2316	106	400	110	300	27	40	45	209	219	78	-	154	-	23	M22	UK316+H2316	123000	86400	P316	-	-	CUKP316C(CE)+H2316	16.6	-	23.9	
75	UKP217+H2317	95.2	310	83	247	25	31	32	187	199	82	-	150	-	26	M20	UK217+H2317	83500	61800	P217	-	-	CUKP217C(CE)+H2317	12.8	-	14.8	
	UKPX17+H2317	101.6	381	102	283	27	59	42	202	-	82	-	-	-	-	M22	UKX17+H2317	95500	71400	PX17	-	-	-	17.0	-	-	
	UKP317+H2317	112	420	110	320	33	45	45	221	234	82	-	164	-	26	M27	UK317+H2317	132000	96500	P317	-	-	CUKP317C(CE)+H2317	18.6	-	27.1	
80	UKP218+H2318	101.6	327	88	262	27	33	34	200	211	86	-	164	-	31	M22	UK218+H2318	95500	71400	P218	-	-	CUKP218C(CE)+H2318	15.1	-	18.6	
	UKPX18+H2318	101.6	381	111	283	27	60	45	206	-	86	-	-	-	-	M22	UKX18+H2318	109000	81600	PX18	-	-	-	16.7	-	-	
	UKP318+H2318	118	430	110	330	33	45	50	233	245	86	-	168	-	26	M27	UK318+H2318	143000	107200	P318	-	-	CUKP318C(CE)+H2318	21.1	-	30.9	
85	UKP319+H2319	125	470	120	360	36	50	50	250	257	90	-	180	-	30	M30	UK319+H2319	153000	118400	P319	-	-	CUKP319C(CE)+H2319	26.5	-	37.1	
90	UKPX20+H2320	127	432	121	337	33	64	52	250	-	97	-	-	-	-	M27	UKX20+H2320	134000	104700	PX20	-	-	-	32.1	-	-	
	UKP320+H2320	140	490	120	380	36	50	55	275	282	97	-	190	-	31	M30	UK320+H2320	173000	140400	P320	-	-	CUKP320C(CE)+H2320	34.3	-	45.2	
100	UKP322+H2322	150	520	140	400	40	55	60	295	305	105	-	210	-	36	M33	UK322+H2322	205000	178800	P322	-	-	CUKP322C(CE)+H2322	42.6	-	55.1	
110	UKP324+H2324	160	570	140	450	40	55	70	321	328	112	-	220	-	35	M33	UK324+H2324	207000	184800	P324	-	-	CUKP324C(CE)+H2324	53.0	-	73.8	
115	UKP326+H2326	180	600	140	480	40	55	80	354	358	121	-	230	-	36	M33	UK326+H2326	229000	214300	P326	-	-	CUKP326C(CE)+H2326	72.4	-	93.3	
125	UKP328+H2328	200	620	140	500	40	55	80	388	388	131	-	240	-	37	M33	UK328+H2328	255000	246000	P328	-	-	CUKP328C(CE)+H2328	89.4	-	111	

Remarks (1): Grease nipple : PF1/8

Remarks (2): Examples of number of units with covers:

With cast cover { Covers with rubber seal on both sides : CUKP215C+H2315  
 { An end cover and a cover with rubber seal : CUKP215CE+H2315