

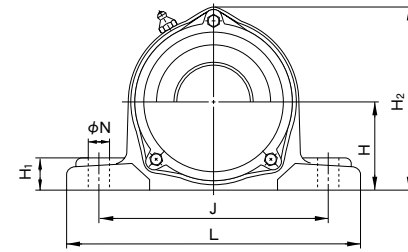
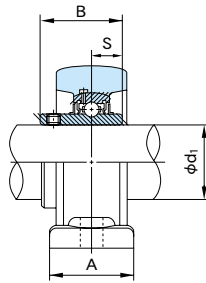
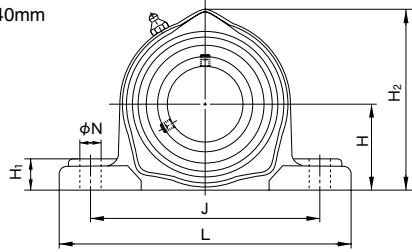
Cast Steel Pillow Block Units

UCPK type

With set screws

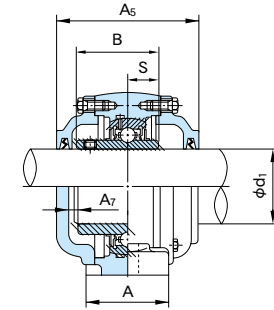
Cylindrical bore

Shaft dia. : 50 ~ 140mm



1N=0.102kgf

With cast covers



Shaft dia. d ₁ (mm)	Unit No.	Boundary dimensions (mm)											Bolt size	Bearings			Housing No.	Unit No. with cast covers		Mass of Unit (kg)	
		H	L	A	J	N	H ₁	H ₂	B	S	A ₅	A ₇		No.	Basic load rating (N)			Covers with rubber seal (End cover on one side)	standard	with cast cover	
															Cr	Cor					
50	<i>UCPK210</i>	57.2	200	55	159	19	22	120	51.6	19	98	10	M16	<i>UC210</i>	35500	23200	PK210	<i>CUCPK210C(CE)</i>	3.5	4.4	
55	<i>UCPK211</i>	63.5	216	55	171	19	22	133	55.6	22.2	100	10	M16	<i>UC211</i>	43000	29400	PK211	<i>CUCPK211C(CE)</i>	4.5	5.7	
60	<i>UCPK212</i>	69.8	233	65	184	19	25	145	65.1	25.4	114	11	M16	<i>UC212</i>	52500	36100	PK212	<i>CUCPK212C(CE)</i>	5.7	6.8	
65	<i>UCPK213</i>	76.2	258	70	203	24	27	156	65.1	25.4	118	13	M20	<i>UC213</i>	57500	40000	PK213	<i>CUCPK213C(CE)</i>	6.7	8.2	
	<i>UCPK313</i>	90	326	85	260	24	36	188	75	30	140	17	M20	<i>UC313</i>	92500	59700	PK313	<i>CUCPK313C(CE)</i>	12.2	14.6	
70	<i>UCPK214</i>	79.4	266	72	210	24	27	162	74.6	30.2	134	16	M20	<i>UC214</i>	62000	44000	PK214	<i>CUCPK214C(CE)</i>	7.6	9.4	
	<i>UCPK314</i>	95	350	85	280	26	40	198	78	33	140	17	M22	<i>UC314</i>	104000	68000	PK314	<i>CUCPK314C(CE)</i>	14.8	17.5	
75	<i>UCPK215</i>	82.6	272	74	217	24	28	167	77.8	33.3	136	17	M20	<i>UC215</i>	66000	48200	PK215	<i>CUCPK215C(CE)</i>	8.1	10.3	
	<i>UCPK315</i>	100	366	90	290	26	40	208	82	32	150	17	M22	<i>UC315</i>	114000	76900	PK315	<i>CUCPK315C(CE)</i>	17.0	20.0	
80	<i>UCPK216</i>	88.9	288	75	232	24	30	188	82.6	33.3	146	15	M20	<i>UC216</i>	72500	53000	PK216	<i>CUCPK216C(CE)</i>	10.4	13.3	
	<i>UCPK316</i>	106	386	100	300	26	45	219	86	34	154	17	M22	<i>UC316</i>	123000	86400	PK316	<i>CUCPK316C(CE)</i>	19.7	23.4	
85	<i>UCPK217</i>	95.2	303	80	247	24	32	199	85.7	34.1	150	15	M20	<i>UC217</i>	83500	61800	PK217	<i>CUCPK217C(CE)</i>	12.2	15.4	
	<i>UCPK317</i>	112	407	105	320	32	45	234	96	40	164	18	M27	<i>UC317</i>	132000	96500	PK317	<i>CUCPK317C(CE)</i>	22.9	27.3	
90	<i>UCPK218</i>	101.6	322	85	262	26	34	211	96	39.7	164	17	M22	<i>UC218</i>	95500	71400	PK218	<i>CUCPK218C(CE)</i>	15.2	18.9	
	<i>UCPK318</i>	118	417	105	330	32	50	245	96	40	168	20	M27	<i>UC318</i>	143000	107200	PK318	<i>CUCPK318C(CE)</i>	25.9	30.8	
95	<i>UCPK319</i>	125	455	115	360	35	50	257	103	41	180	20	M30	<i>UC319</i>	153000	118400	PK319	<i>CUCPK319C(CE)</i>	33.1	38.4	
100	<i>UCPK320</i>	140	475	115	380	35	55	282	108	42	190	21	M30	<i>UC320</i>	173000	140400	PK320	<i>CUCPK320C(CE)</i>	40.2	46.4	
105	<i>UCPK321</i>	140	475	115	380	35	55	287	112	44	194	21	M30	<i>UC321</i>	183000	153100	PK321	<i>CUCPK321C(CE)</i>	40.4	47.4	
110	<i>UCPK322</i>	150	505	130	400	38	60	305	117	46	210	26	M33	<i>UC322</i>	205000	178800	PK322	<i>CUCPK322C(CE)</i>	47.8	55.9	
120	<i>UCPK324</i>	160	555	130	450	38	70	328	126	51	220	25	M33	<i>UC324</i>	207000	184800	PK324	<i>CUCPK324C(CE)</i>	63.8	75.2	
130	<i>UCPK326</i>	180	585	130	480	38	80	358	135	54	230	24	M33	<i>UC326</i>	229000	214300	PK326	<i>CUCPK326C(CE)</i>	81.6	94.4	
140	<i>UCPK328</i>	200	605	130	500	38	80	388	145	59	240	24	M33	<i>UC328</i>	255000	246000	PK328	<i>CUCPK328C(CE)</i>	95.9	110	

Remarks (1): Please contact NACHI for units number appeared in italic.

Remarks (2): Grease nipple :

1/4-28UNF for bore number 13 and under
PF1/8 for bore number 14 and over

Remarks (3): Examples of number of units with covers:

With cast cover { Covers with rubber seal on both sides : CUCPK210C
An end cover and a cover with rubber seal : CUCPK210CE