

Fast palletizing robot

LP130F



High-speed handling

1,800 packages per hour at maximum (for 130kg loads)

(Improvement of **20%** compared with the conventional model)

High performance based on the large capacity motor and the enhanced optimized motion control

* Motion pattern: 400mm in vertical direction, 2,000mm in horizontal direction and 60 degree in swivel movement

Flexible palletizing

Flexible layout of work-piece of various shapes/sizes due to the wide operation range

(Pallet area size: 1,600mm squares and the height is up to 2,212mm)

Handling with suitable hand (option) for the work-piece is available

Compact layout

The large motion range and the space saving design reducing the interference amount realize the compact and flexible design of the equipments

Easy operation

Easy setup due to an interactive interface

Easy programming by interactive program generator



Robot specifications

Item		Specifications	
Robot model		LP130F-01	
Structure		Articulated	
Number of axes		4	
Drive system		AC servo system	
Max. operating envelope	Arm	J1 Swivel	$\pm 3.14\text{rad}$ ($\pm 180^\circ$)
		J2 Forward/backward	$+0.71 \sim -1.65\text{rad}$ ($+40 \sim -94.5^\circ$)
		J3 Upward/downward	$+0.30 \sim -2.04\text{rad}$ ($+17 \sim -116^\circ$)
Wrist	J4 Rotation	$\pm 6.28\text{rad}$ ($\pm 360^\circ$)	
Max. velocity	Arm	J1 Swivel	2.53rad/s ($145^\circ/\text{s}$)
		J2 Forward/backward	2.01rad/s ($115^\circ/\text{s}$)
		J3 Upward/downward	2.01rad/s ($115^\circ/\text{s}$)
	Wrist	J4 Rotation	9.34rad/s ($535^\circ/\text{s}$)
Max. payload	Wrist	130kg	
	Forearm*1	Max. 25kg	
Allowable moment of inertia for wrist	J4 Rotation	50kgm ²	
Position repeatability*2		$\pm 0.09\text{mm}$	
Operating pressure		-101.3~690kPa	
Air piping		2- $\phi 12 \times 8$ (to the wrist)	
Application wirings		20 circuits (to the wrist) 6 circuits (to the forearm)	
Installation		Floor	
Ambient conditions		Ambient temperature: $0 \sim 45^\circ\text{C}$ *3 Ambient humidity: $20 \sim 85\%$ RH (without condensation) Vibration: Not more than 0.5G	
Robot mass		1,150kg	

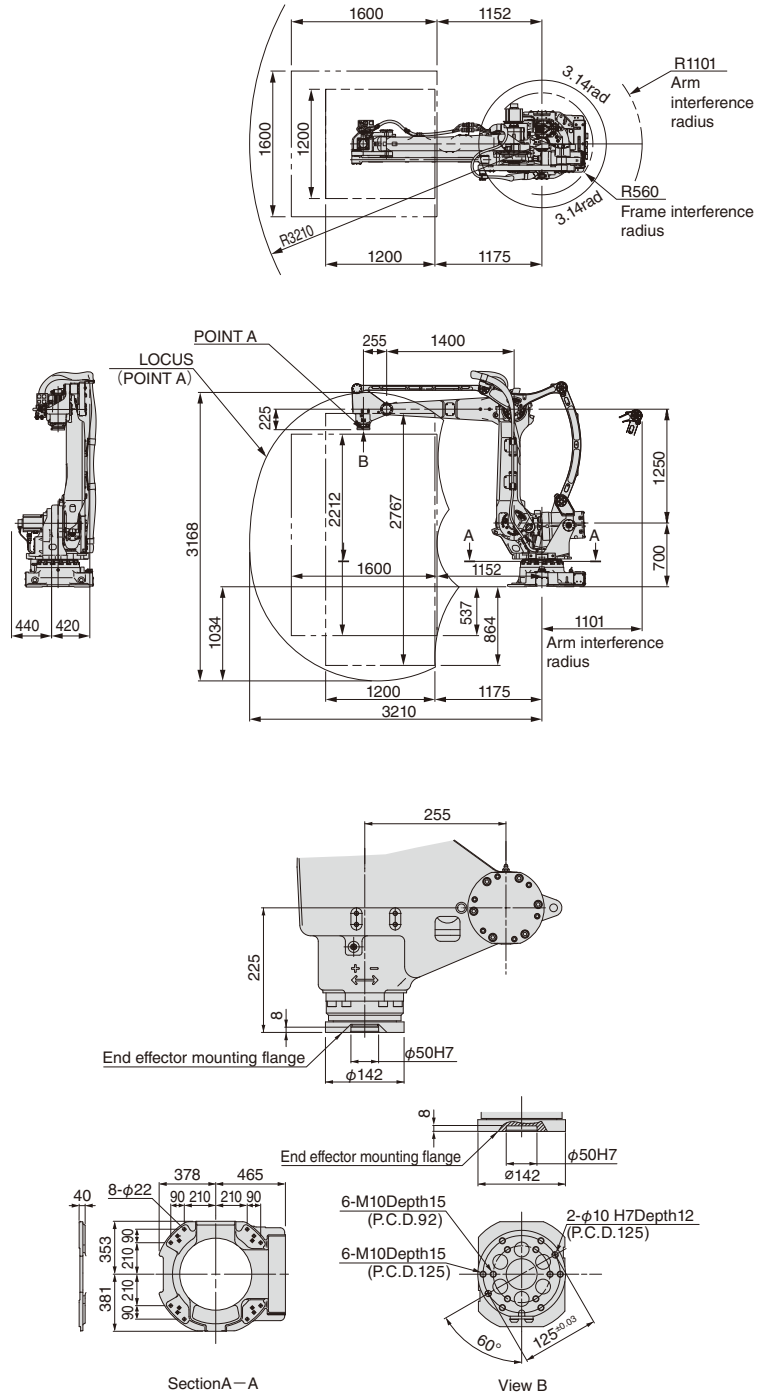
1[rad] = $180/\pi$ [°], 1 [N·m] = 1/9.8 [kgf·m]

*1: This number varies due to the attachment position and wrist payload weight.

*2: This value conforms to "JIS B 8432".

*3: Permitted height is not higher than 1,000m above sea level. If used in higher place, permitted temperature is affected by height.

Exterior dimensions and operating envelope



NACHI

NACHI-FUJIKOSHI CORP.

www.nachi.com

Head Office Shiodome Sumitomo Bldg. 17F, 1-9-2 Higashi-Shinbashi, Minato-ku, Tokyo 105-0021
Robot Division 1-1-1 Fujikoshi-Honmachi, Toyama 930-8511, JAPAN

Tel: +81-(0)3-5568-5111
Tel: +81-(0)76-456-2223

Fax: +81-(0)3-5568-5206
Fax: +81-(0)76-493-5252

NACHI ROBOTIC SYSTEMS INC.
NACHI MEXICANA, S.A. DE C.V.
NACHI EUROPE GmbH
NACHI TECHNOLOGY (THAILAND) CO., LTD.
PT.NACHI INDONESIA
NACHI-FUJIKOSHI (CHINA) CO., LTD.

Michigan, U.S.A.
MEXICO
GERMANY
THAILAND
INDONESIA
CHINA

Tel: +1-248-305-6545
Tel: +52-442-153-2424
Tel: +49-(0)2151-65046-0
Tel: +66(38)961679
Tel: +62-021-527-2841
Tel: +86-(0)21-6915-2200

Fax: +1-248-305-6542
Fax: +52-442-153-2435
Fax: +49-(0)2151-65046-90
Fax: +66(38)961683
Fax: +62-021-527-3029
Fax: +86-(0)21-6915-5427

<http://www.nachirobotics.com>
<http://www.nachi.com.mx/>
<http://www.nachi.de/>
<http://www.nachi.co.th/>
<http://www.nachi.co.id/>
<https://www.nachi.com.cn/>

● The specifications are subject to changes without notice.
● In case that an end user uses this product for military purpose or production of weapon, this product may be liable for the subject of export restriction stipulated in the Foreign Exchange and Foreign Trade Act. Please go through careful investigation and necessary formalities for export.

CATALOG NO. R7415E-2

2024.02. * -ABE-ABE